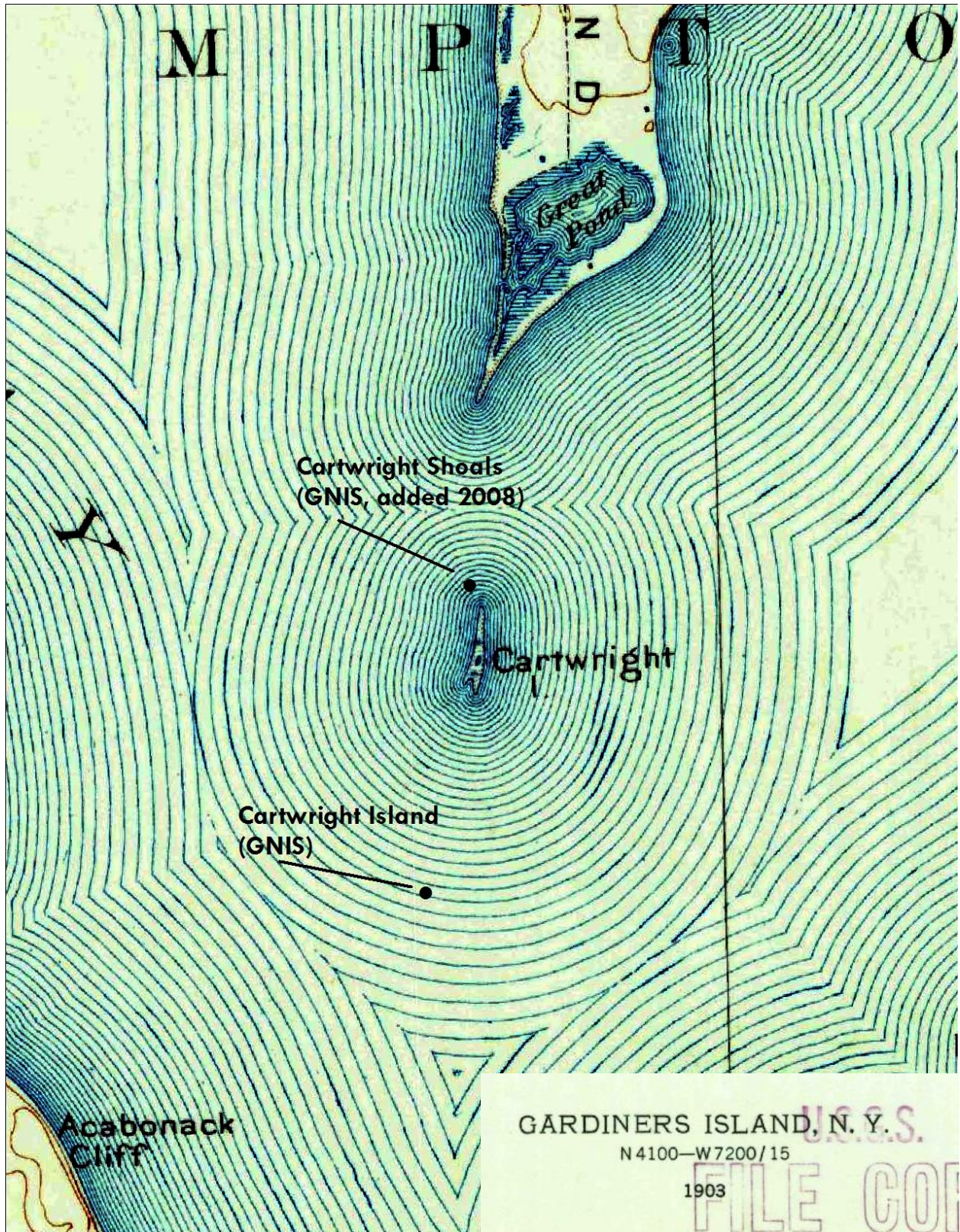
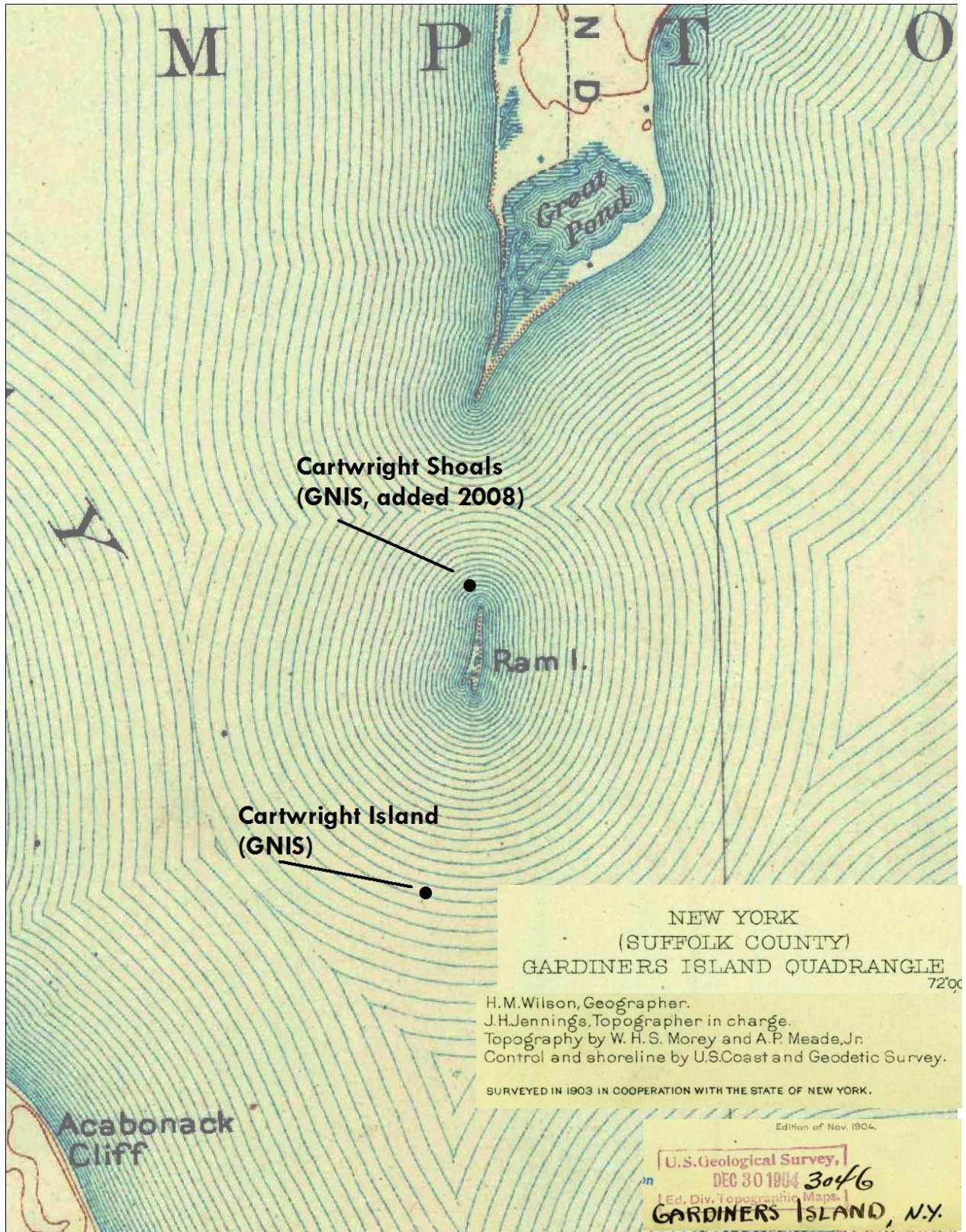


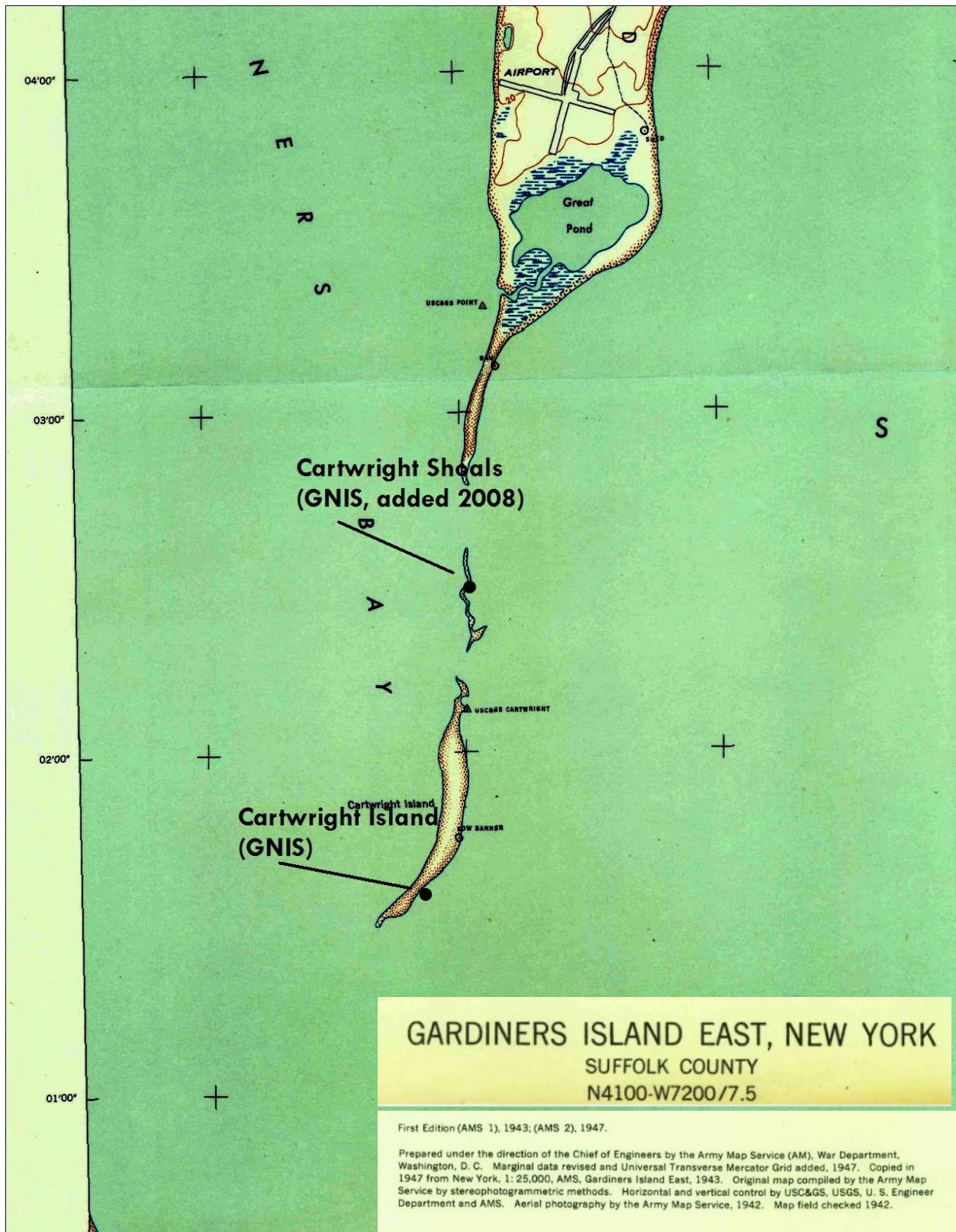
Representative base map



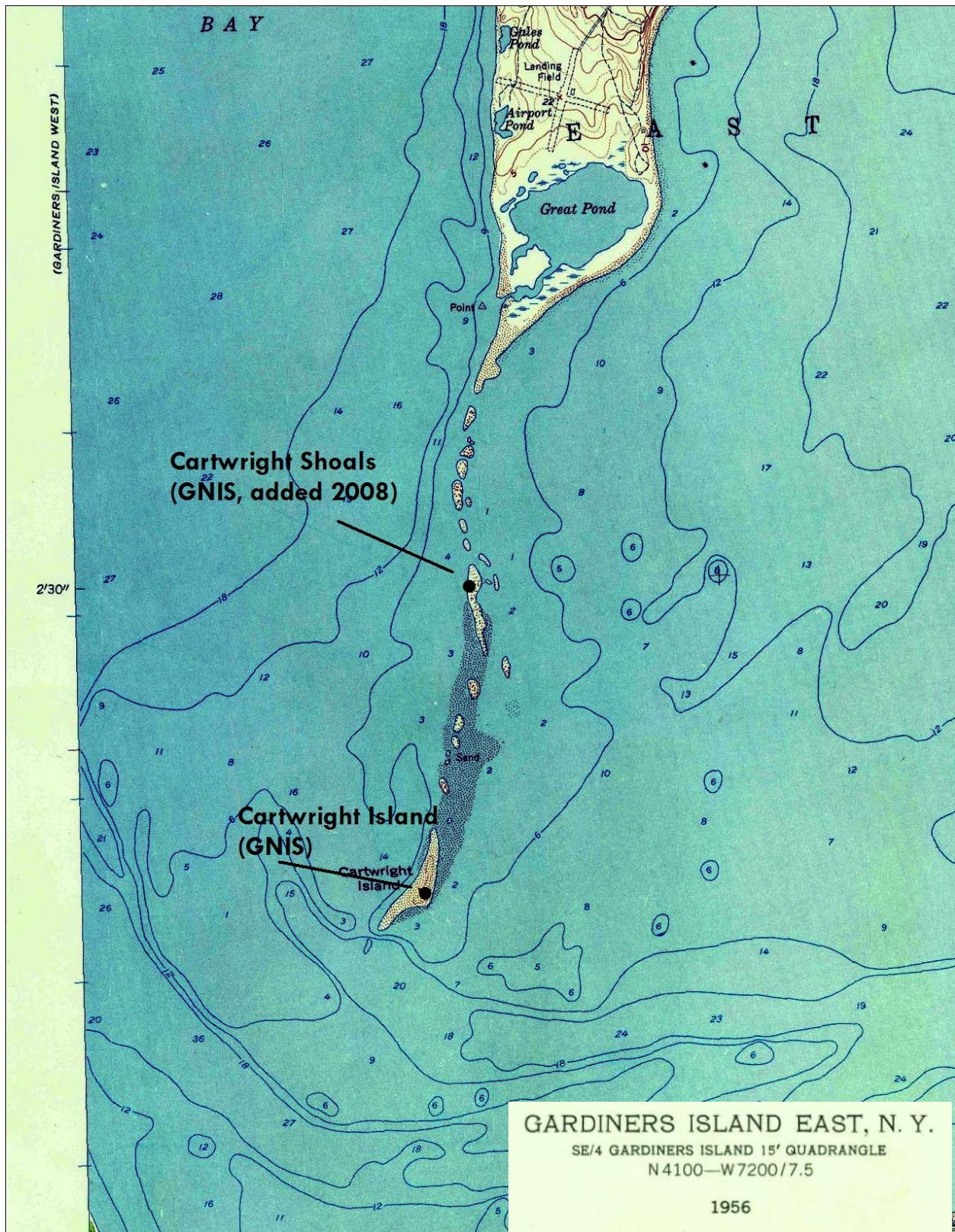
Gardiners Island quad 1903 1:62500



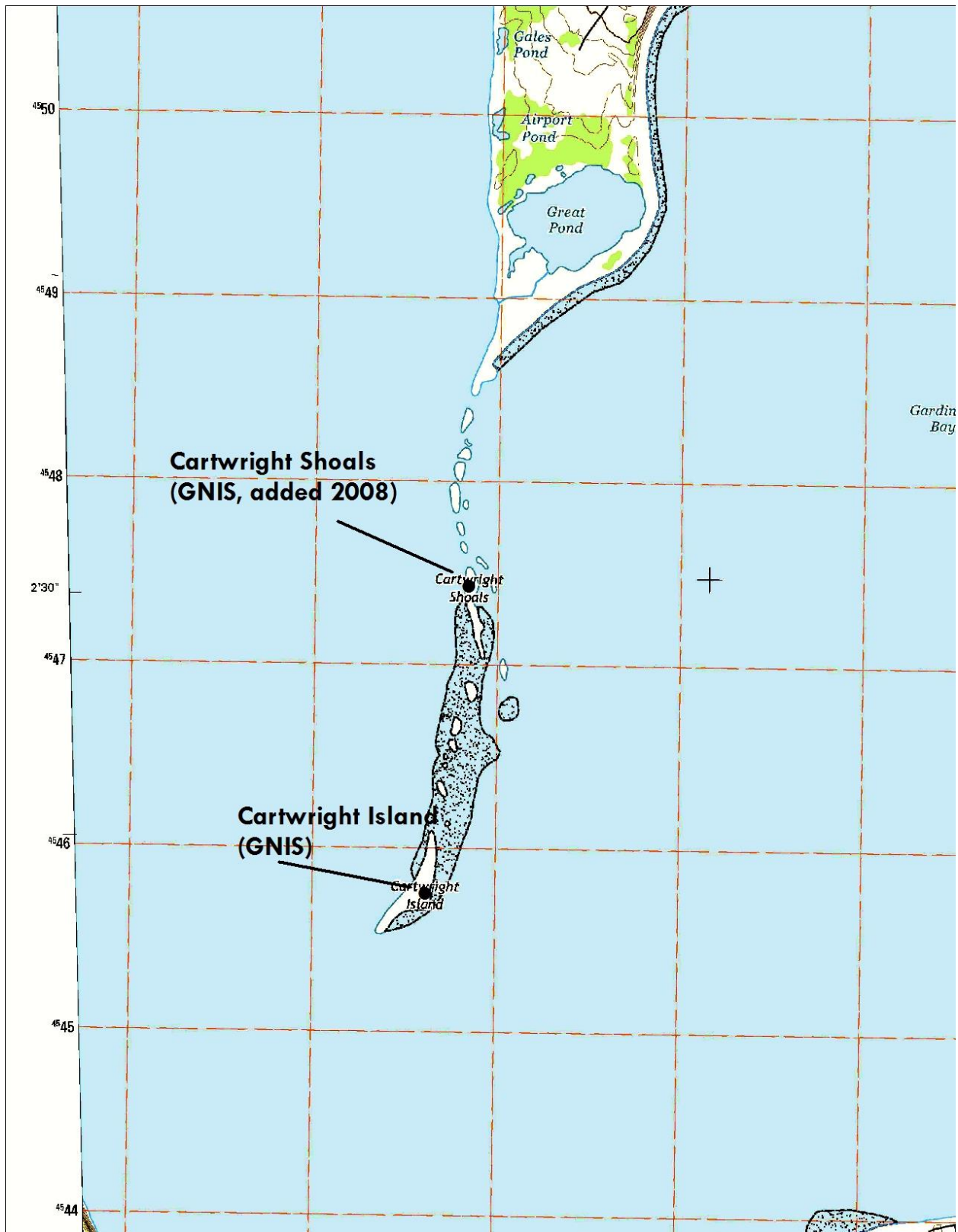
Gardiners Island quad 1903 (1904 edition) 1:62500



Gardiners Island East quad 1943 (1947 edition) 1:24000



Gardiners Island East quad 1956 1:24000



Gardiners Island East USTopo 1:24000

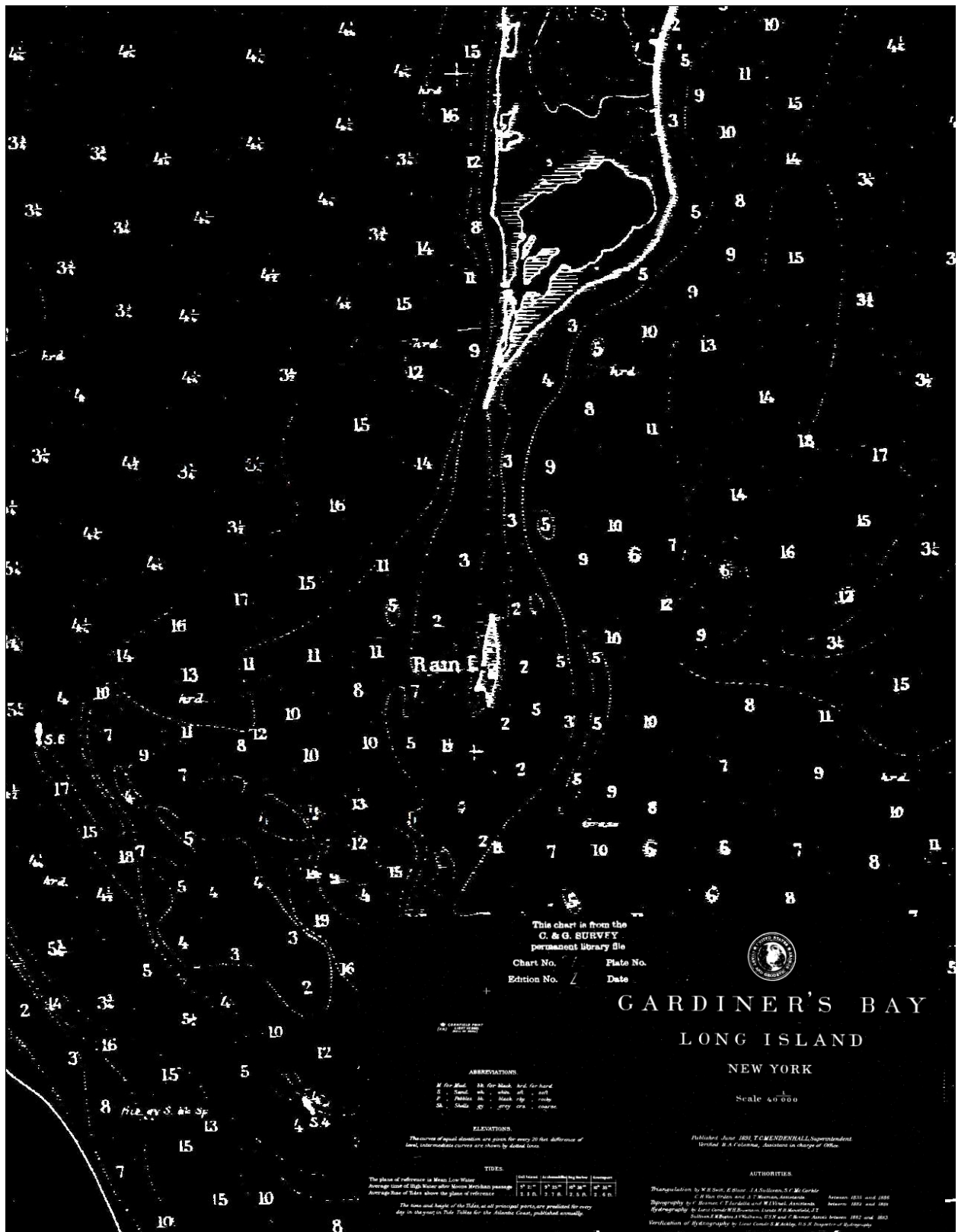


Chart 298, 1891

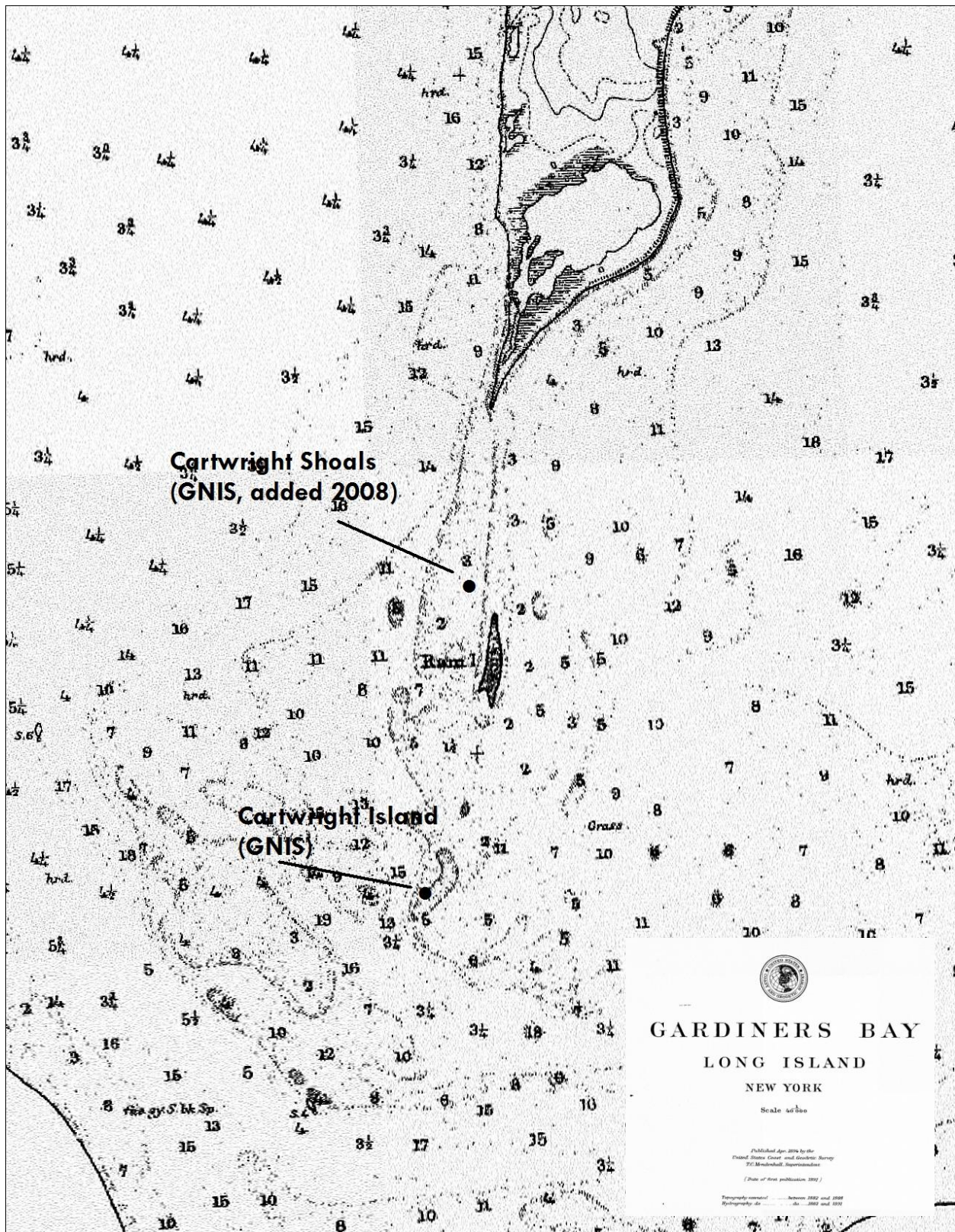


Chart 298, 1894

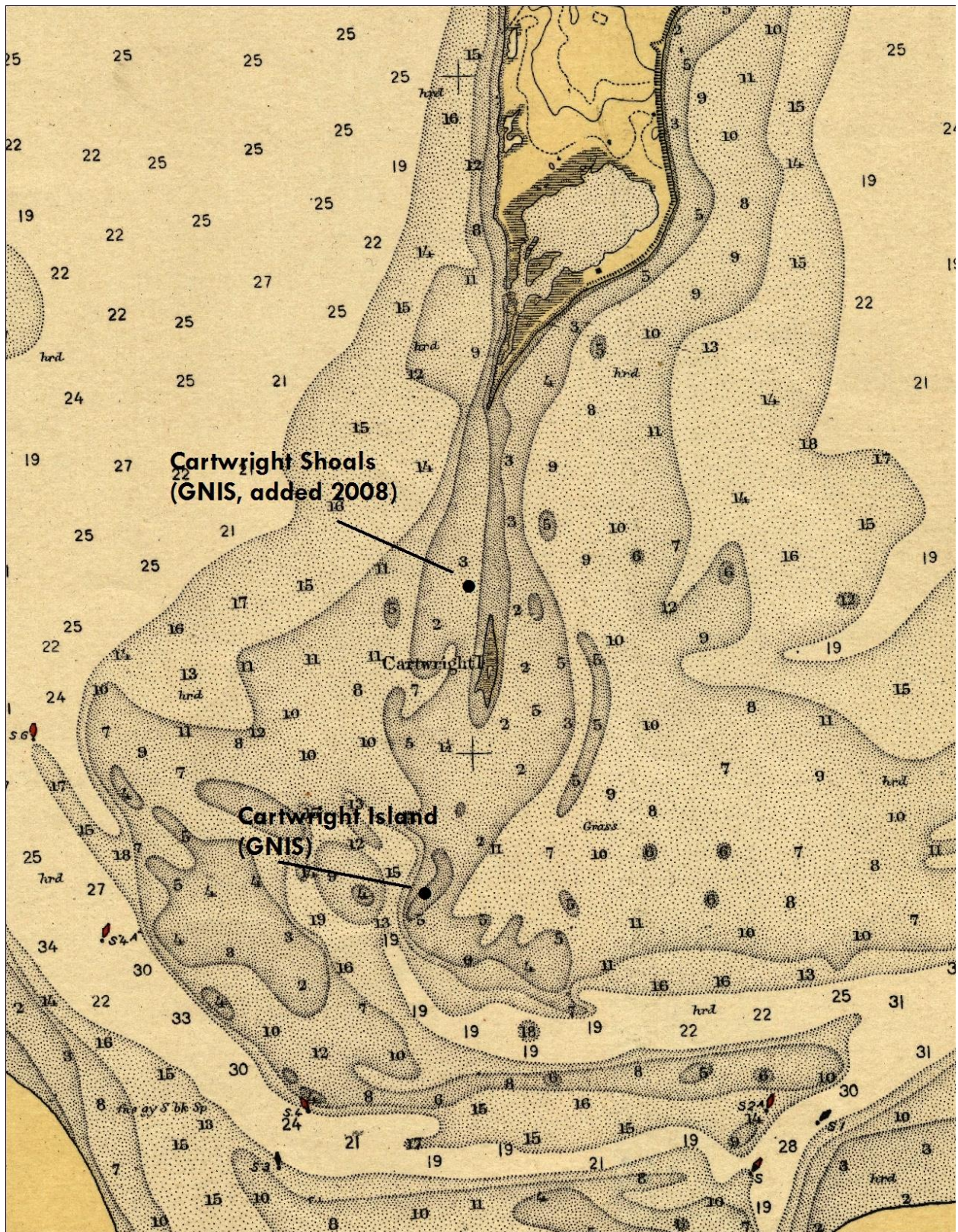


Chart 298, 1920

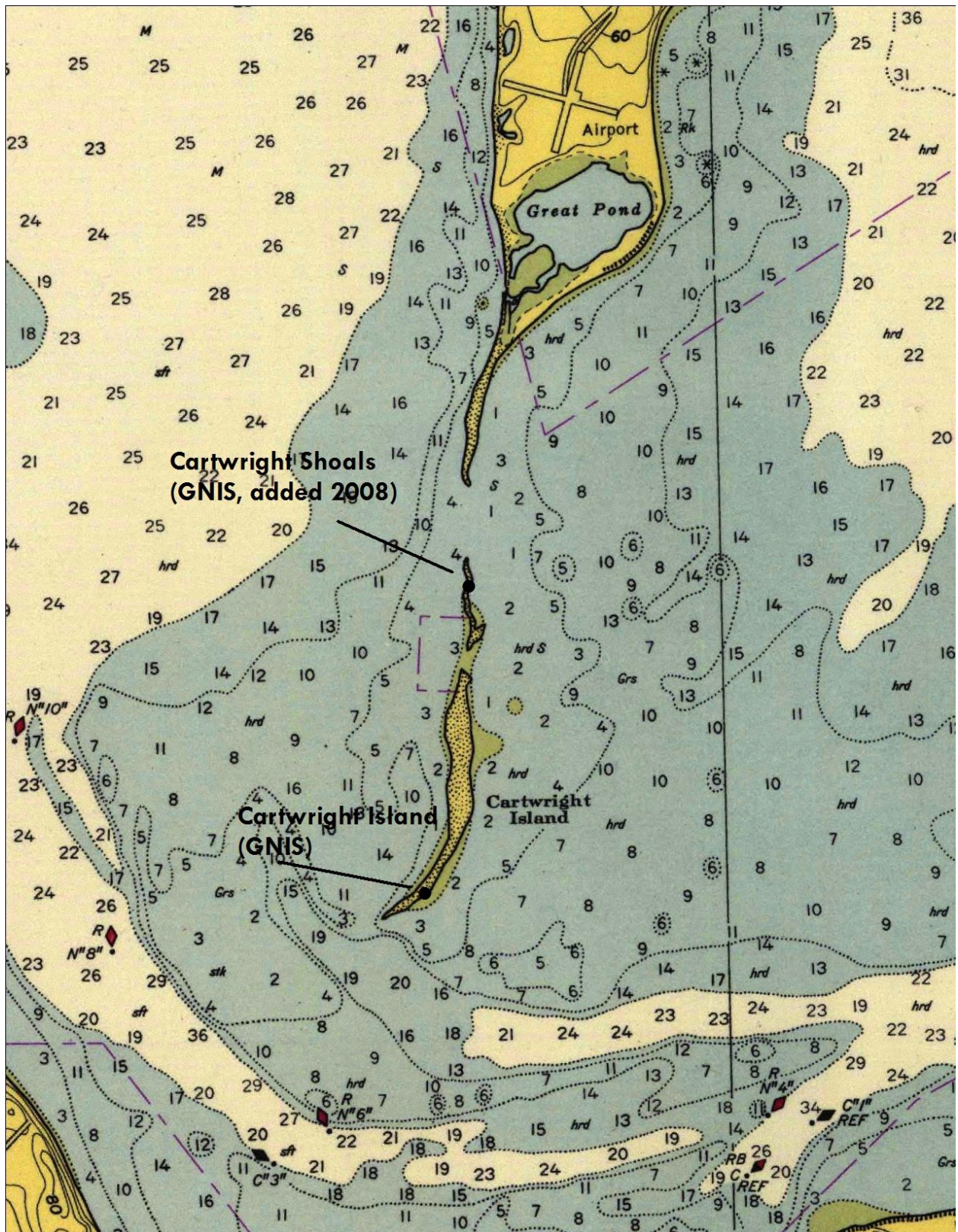


Chart 362, 1951

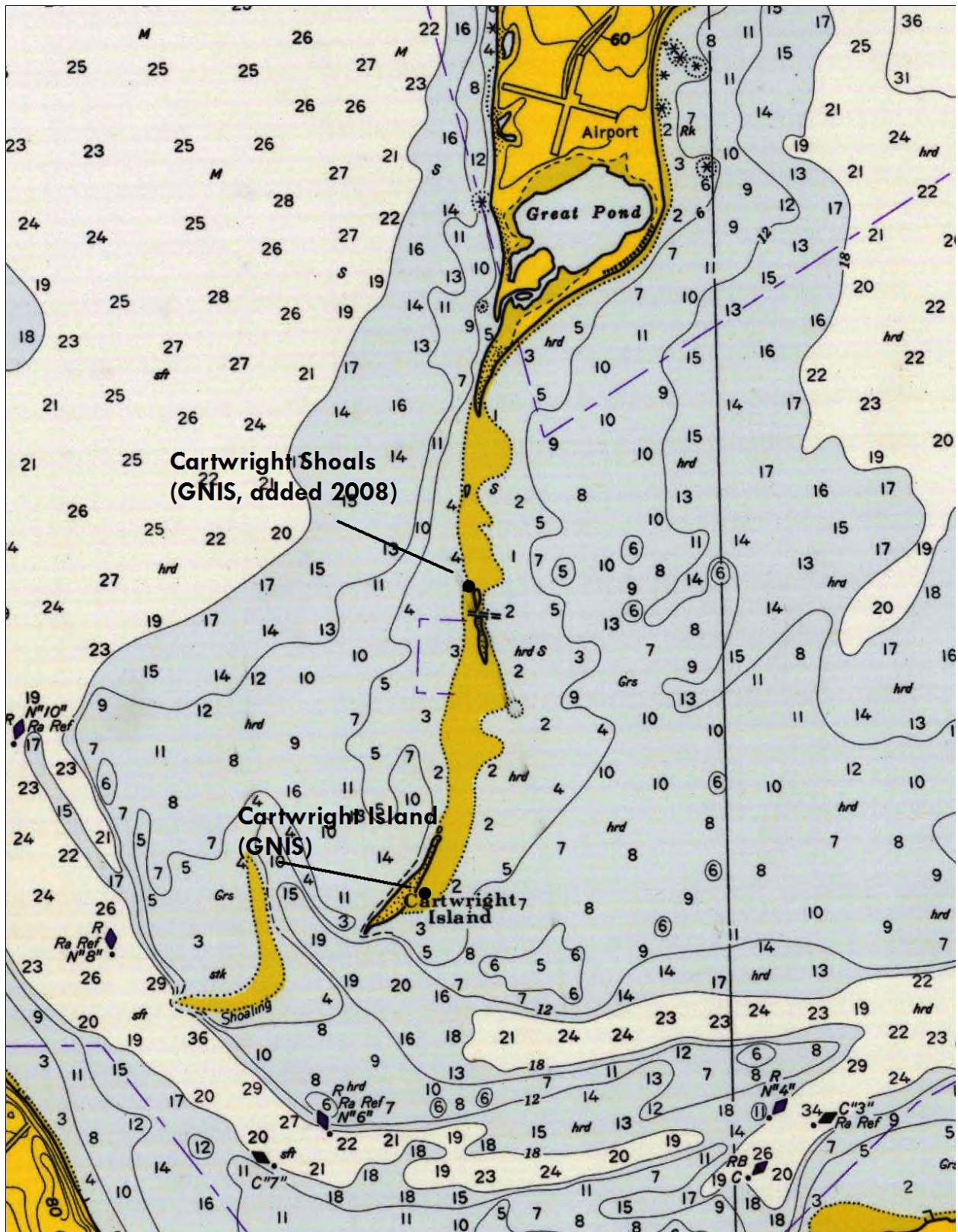


Chart 362, 1973

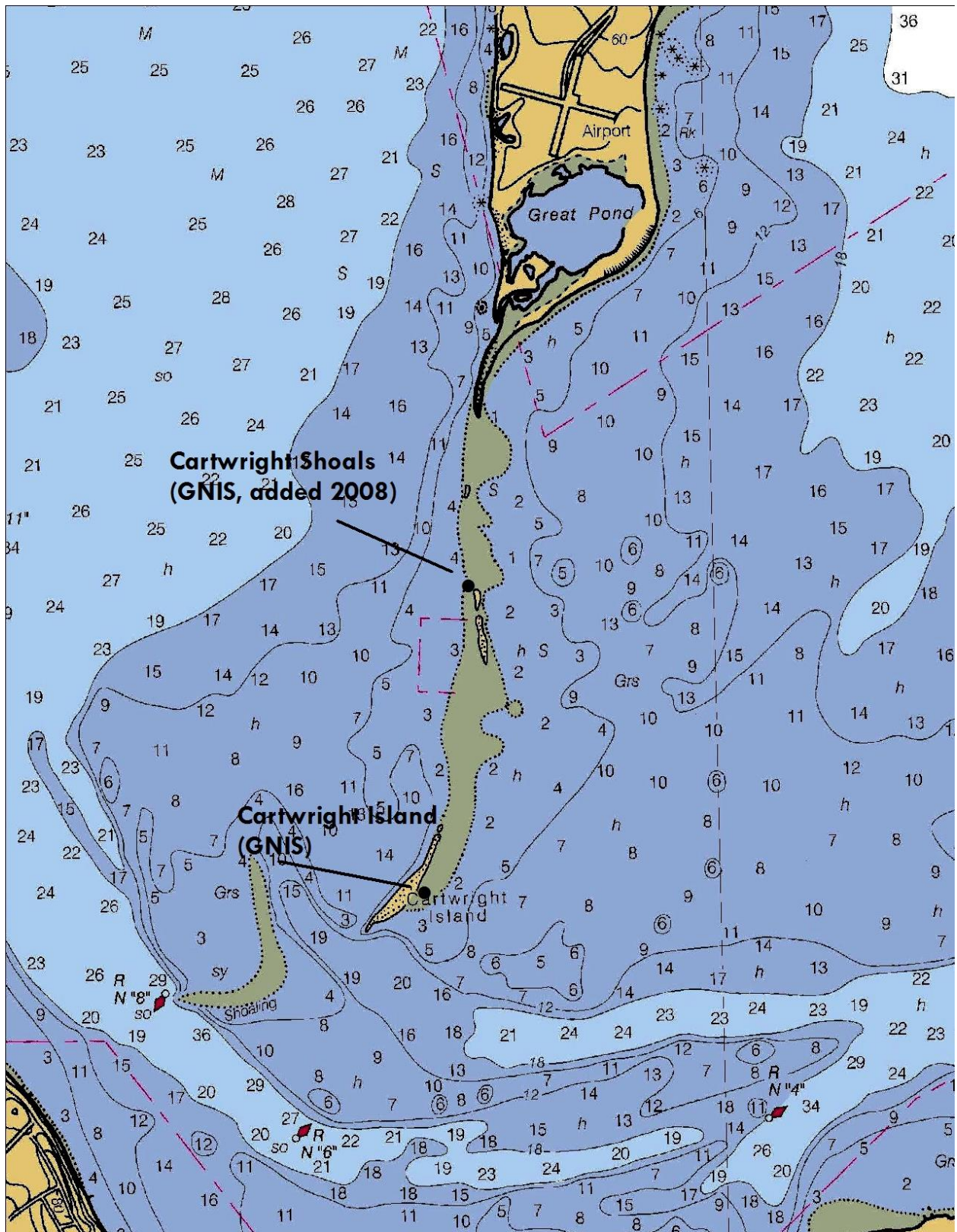
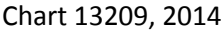


Chart 13209, 2007



30 March 1908

Letter attached to Cartwright Island GNIS entry (https://geonames.usgs.gov/apex/f?p=gnispq:3:::NO::P3_FID:945934)

From: Wallace Halsey (Civil Engineer and Surveyor of Shellfisheries for Suffolk County)

To: Charles Sloane (BGN?)

Encloses affidavits and letters

Jonathan Gardiner affirms:

"I remember positively that Ram Island has entirely disappeared and the Island named on Government Chard 298 as Ram Island is today and always has been names Cartwright Island. I remember when Ram Island was covered with beach grass and beach plumb bushes and was nearly ½ mile long. I have landed on it many times."

Captain W. H. Conklin affirms:

"As I remember Ram Island it was about 2000 feet long and nearly 1000 feet wide and that there was a narrow channel separating Ran Island from Cartwright Island until about 1880 since which time Ram Island has been entirely submerged at highwater. The island you now have located on the government chard as far back as I can remember has always been known as Cartwright Island."

Jesse B. Edwards affirms:

"in regard to Ram Island. Ram Island where it existed before it was washed away [???] about South west about 75 rods from Cartwright Shoal, is just [???] at low tide."

Joshua B Edwards affirms:

"As near as I remember back sixty years or more when then southerly part of Ram Island was at that time is now mostly a stoney shoal and parts of it dry at low water it bears southwesterly from Great Pond Point—south part of Gardiners Island."

J Lyon Gardiner affirms:

"the island marked Ram Island on USC&GS Chart No 298 is now and has always been called Cartwright Island. Ram Island lies about a half mile south of Cartwright Island and is submerged at mean low water. When I first saw it (over 50 years ago) it was ¼ to 1/2/ mile long, 8 or 10 rods wide and covered with beach grass and bushes. It consisted entirely of loose sand and gravel. At present it is only a shoal; but at extremely low tides one can walk from the south point of Gardiners Island to the south point of Ram Island, dry footed."

J Lyon Gardiner affirms:

"that the locality on the southern shore of Gardiner's Bay marked "Fire-place" on US C and GS chart No 298 is and has been known for generations as "Deep Hole" and that the true location of Fire-place is at a point on the shore of the Bay bearing South West by compass from my [???]-long house on Gardiner's Island, distant 3 ½ miles."

George A Miller affirms:

"I am and have for forty years been well acquainted with the situation of affairs about the [???] of Gardiners Bay that I well remember." The [???] of Ram Island in said bay that said Island has been washed away to such an extent that only a little of it now appears at low tide. This said island was an is situated at the extreme south end of which is known as Ram Island Shoal and that what is now designated on the maps as Ram Island is and always has been locally known as Cartwright Island or Shoal."

Charles H. Howell affirms:

"Ram Island as I was always told by Captains of vessels on which I have been a hand is not above water except at very low tide, and old sailors always speak of it as Ram Island Shoal. The island now designated Ram Island is what I have always known as Cartwright Island."